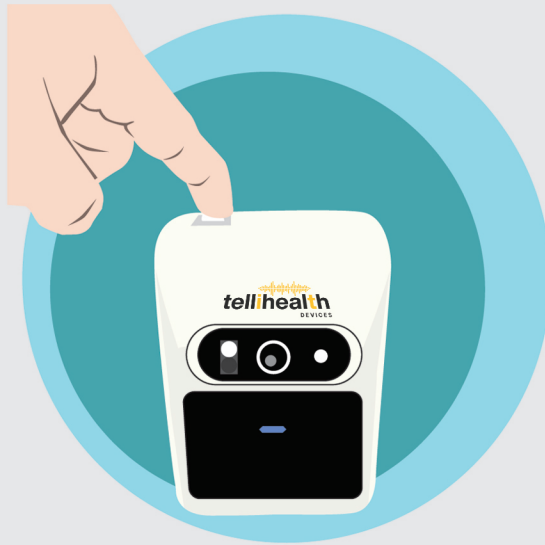


How to use your Thermometer

To charge your device, match one end of your charger into the device port, and the other end into the wall charger.

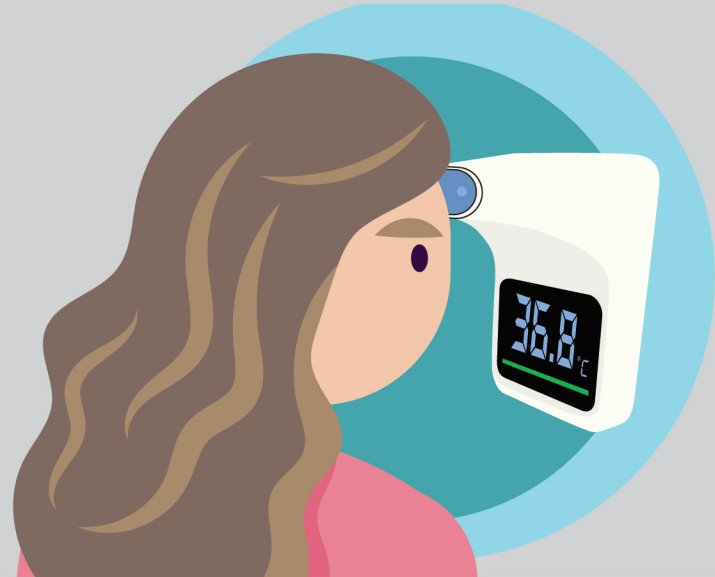
Plug the wall charger into the wall. 3-4 hours is sufficient time to charge your device.

Switch the button on.



1

Hold the device parallel to the forehead (1-10 cm) until you see a blue light.



2

When you hear a long beep the measurement has finished. It will display a rotating bar, you will notice the device will count up to 5.



3

Wait until "PAS" pops up



4